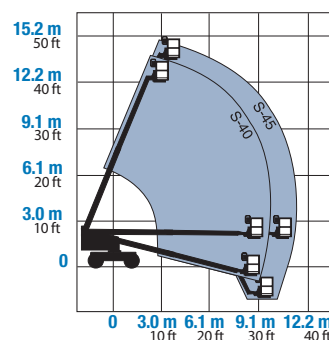


Specifications

MODELS	Model S-40		S-45	
MEASUREMENTS	Metric	Imperial	Metric	Imperial
Working height max*	14 m	46 ft	15.5 m	51 ft
Platform height max	12.2 m	40 ft	13.7 m	45 ft
A Height - stowed	2.5 m	8 ft	2 in 2.5 m	8 ft 2 in
B Length - stowed	7.4 m	24 ft	3 in 8.5 m	27 ft 10 in
C Width	2.3 m	7 ft 6 in	2.3 m	7 ft 6 in
D Wheelbase	2.2 m	7 ft 3 in	2.2 m	7 ft 3 in
E Ground clearance	32 cm	12 1/2 in	32 cm	12 1/2 in
F Platform length: 6 ft	76 cm	30 in	76 cm	30 in
8 ft	91 cm	36 in	91 cm	36 in
G Platform width:	1.83 m	72 in	1.83 m	72 in
	2.44 m	96 in	2.44 m	96 in
Horizontal reach max	9.7 m	31 ft 8 in	11.2 m	36 ft 8 in

RANGE OF MOTION



PRODUCTIVITY

Lift capacity	227 kg	500 lb	227 kg	500 lb
Turning radius – outside	4.78 m	15 ft 8 in	4.78 m	15 ft 8 in
Turning radius – inside	2 m	6 ft 8 in	2 m	6 ft 8 in
Turntable tailswing	86 cm	34 in	86 cm	34 in
Tyres – RT Lug	12 -16.5 NHS		12 -16.5 NHS	
Tyres – Ribbed (4x2 front)	12.5 L -16 SL		12.5 L -16 SL	
Drive speed, stowed	6.1 kph	3.8 mph	4.5 kph	2.8 mph
Deutz Diesel models				
Drive speed, raised or extended	1.1 kph	0.68 mph	1.1 kph	0.68 mph
Gradeability – stowed	45%		40%	

POWER

Power source	Deutz Diesel 37 kw (50 hp)			
Platform rotation	160°		160°	
Auxiliary power unit	12V DC		12V DC	
Hydraulic tank capacity	170 litres	45 gal	170 litres	45 gal
Fuel tank capacity	125 litres	33 gal	124.9 litres	33 gal

WEIGHT

Weight**	5,582 kg	12,306 lb	6,709 kg	14,790 lb
----------	----------	-----------	----------	-----------

STANDARDS COMPLIANCE

ANSI/SIA A92.5
CAN3-B354.4-M82
CE
AS 1418.10

* The working height adds 2 m to platform height. Imperial adds 6 ft to platform height

** Weight will vary depending on options and/or country standards.

Features

STANDARD FEATURES

MEASUREMENTS

- S-40 has 14 m (46 ft) working height
- S-45 has 15.5 m (51 ft) working height
- 227 kg (500 lb) lift capacity

PRODUCTIVITY

- Oscillating axle system on 4x4 models
- Dual fuel (Gas/LPG) or diesel engine options
- Fully proportional platform controls with ramp up/down feature
- Hydraulic platform rotation
- 360° continuous turntable rotation
- 12V DC auxiliary power
- Fuel select switch on platform and ground control panels (Gas/LPG models)
- Closed-loop hydrostatic drive
- Hydraulic oil cooler
- Positive traction drive
- Drive enable system
- Self-levelling platform
- Locking turntable covers
- Anti-restart engine protection
- Auto engine fault shutdown
- AC wiring to platform
- Wire braided hose
- Tilt alarm
- Horn
- Hour meter
- Foam-filled tyres
- Alarm package
- 2.44 m (8 ft) steel platform

POWER

- Deutz Diesel 37 kw (50 hp)



OPTIONS & ACCESSORIES

PRODUCTIVITY

- Cold start packages
- 5000 watt AC generator
- Platform swing gate
- Air line to platform
- Platform rail pinch guard
- Platform work lights
- Lockable platform control box cover
- Tool tray
- Fluorescent tube caddy
- Hostile environment packages
- Driving lights
- Weld lead to platform
- Spark arrester (Ford and Deutz)
- Scrubber/spark arrester (Deutz)

ATTACHMENT OPTIONS

Genie has a large range of attachments available. Please contact Genie or your nearest Genie telehandler dealer.

Genie Australia

591 Boundary Road, Darra, Qld 4076
PO Box 394, Richlands, Qld 4077
Tel: + 61 7 3375 1660
Toll Free In Australia: 1800 331 660
Fax: + 61 7 3375 1002

European Offices

UK

The Maltings
Wharf Road
Grantham NG31 6BH
UK
Tel: +44 (0)1476 584333
Fax: +44 (0)1476 584334

France

10, ZA de la Croix St. Mathieu
28320 Gallardon
France
Tel: +33 (0)2 37 26 09 99
Fax: +33 (0)2 37 26 09 98

Germany

Finienweg 3
28832 Achim/Bremen
Germany
Tel: +49 (0)4202 8852-0
Fax: +49 (0)4202 8852-25

Spain

Gai'a 31, Pol. Ind. Pl'a d'en Coll
08110 Montcada i Reixac
Barcelona
Spain
Tel: +34 93 572 50 90
Fax: +34 93 572 50 91

Scandinavia

Tagenevägen 72
425 37 Hisings Kärra
Sweden
Tel: +46 31 57 51 00
Fax: +46 31 57 90 20

Genie United States

18340 NE 76th Street
P.O. Box 97030
Redmond, Washington 98073-9730
USA
Tel: +1 425 881-1800
Fax: +1 425 883-3475

WEB: www.genieindustries.com

Distributed By: