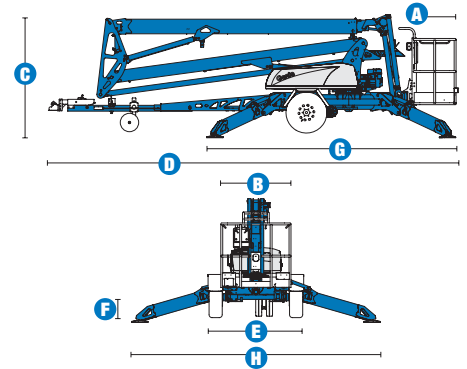


Specifications

MODEL		TZ™-50	
MEASUREMENTS	Metric	Imperial	
Working height*	17.1 m	56 ft 1 in	
Platform height	15.1 m	49 ft 6 in	
Entry height	51 cm	1 ft 6 in	
Horizontal reach	8.9 m	29 ft 2 in	
Up and over clearance	6.7 m	22 ft	
A Platform length	76 cm	2 ft 5 in	
B Platform width	1.1m	3 ft 6 in	
C Height - stowed	2.0 m	6 ft 5 in	
D Length - stowed	6.7 m	22 ft	
E Width - stowed	1.68 m	5 ft 5 in	
F Ground clearance	20.3 cm	8 in	
G Outrigger footprint – length	4.3688 m	14 ft 4 in	
H Outrigger footprint – width	4.3688 m	14 ft 4 in	



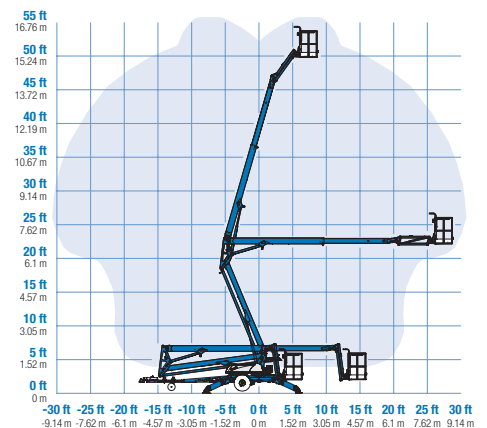
PRODUCTIVITY		
Lift capacity		
CE, AU	200 kg	440 lbs
Levelling capability	10°	
Turntable rotation	359° non-continuous	
Tow speed rating	97 km/h	60 mph
Gradeability	20%	
Towing speed rate	97 km/h	60 mph
Tongue weight	181 kg	400 lbs
Tyres	225/75 R15	

POWER		
Power sources DC	24 V (4 6V 245 AH batteries)	
Hybrid	24 V (4 6V 245 AH batteries)	
Honda Gas	5.5 hp (4.1 kW)	
Fuel tank capacity	4 L /1 Gallon	

WEIGHT****		
Machine weight		
ANSI, CSA, CE, AU	2,200 kg	4,840 lbs

STANDARDS COMPLIANCE	
ANSI A92.2	
CAN/CSA-C225-M88	
CE Compliance	
AS 1418.10	

RANGE OF MOTION TZ™-50



*The working height adds 2 m (6 ft) to platform height.

Features

PLATFORM OPTIONS

- Aluminium 68 cm x 1.12 m (2 ft 2 in x 3 ft 6 in) platform
- 160° hydraulic platform rotation

POWER

- 24 V DC power source
- Hybrid DC/Petrol

DRIVE

- Drive option

TYRES

- 225/75 R15



STANDARD FEATURES

MEASUREMENTS

- 17.1 m (56 ft 1 in) working height*
- 8.9 m (29 ft 2 in) working outreach

PRODUCTIVITY

- Hydraulic outriggers
- Outrigger interlocks
- Automatic leveling system
- Combination hitch, an adjustable height hitch coupler system with 50mm ball coupler
- Variable speed control system
- AC wiring to platform
- Hydraulic surge brakes
- Parking brake
- Tilt alarm/sensor
- Dual jockey wheels
- Hour meter

POWER

- Honda Gas 5.5 hp (4.1 kW)
- 24 V DC 4 x 6V 225 AH Batteries

OPTIONS & ACCESSORIES

PRODUCTIVITY

- Spare tyre
- Battery charge indicator
- Fluorescent tube caddy
- Full size spare tyre
- Non-marking outrigger footpads
- Tool tray

Genie Australia

591 Boundary Road, Darra, Qld 4076
PO Box 394, Richlands, Qld 4077
Tel: + 61 7 3375 1660
Toll Free In Australia: 1800 331 660
Fax: + 61 7 3375 1002

European Offices

UK

The Maltings
Wharf Road
Grantham NG31 6BH
UK
Tel: +44 (0)1476 584333
Fax: +44 (0)1476 584334

France

10, ZA de la Croix St. Mathieu
28320 Gallardon
France
Tel: +33 (0)2 37 26 09 99
Fax: +33 (0)2 37 26 09 98

Germany

Finienweg 3
28832 Achim/Bremen
Germany
Tel: +49 (0)4202 8852-0
Fax: +49 (0)4202 8852-25

Spain

Gai' a 31, Pol. Ind. Pl' a d'en Coll
08110 Montcada i Reixac
Barcelona
Spain
Tel: +34 93 572 50 90
Fax: +34 93 572 50 91

Scandinavia

Tagenevägen 72
425 37 Hisings Kärra
Sweden
Tel: +46 31 57 51 00
Fax: +46 31 57 90 20

Genie United States

18340 NE 76th Street
P.O. Box 97030
Redmond, Washington 98073-9730
USA
Tel: +1 425 881-1800
Fax: +1 425 883-3475

WEB: www.genieindustries.com

Distributed By: